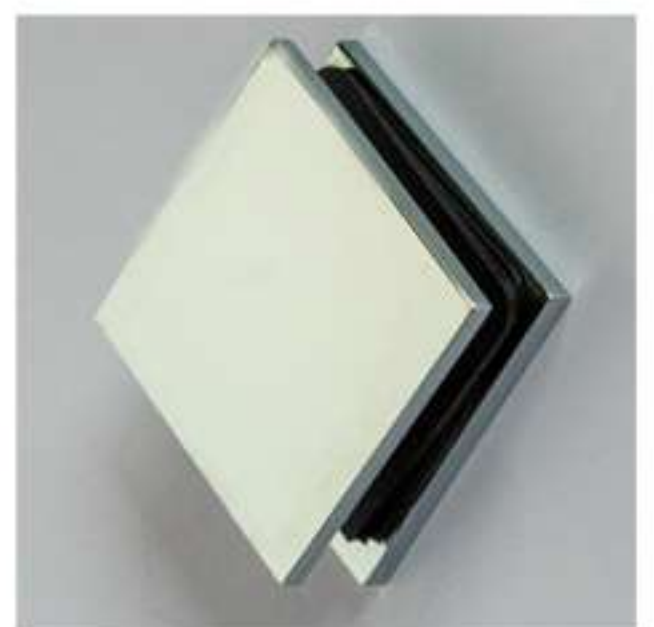


# FINISH OPTIONS

POLISHED NICKEL



POLISHED CHROME



MATTE BLACK



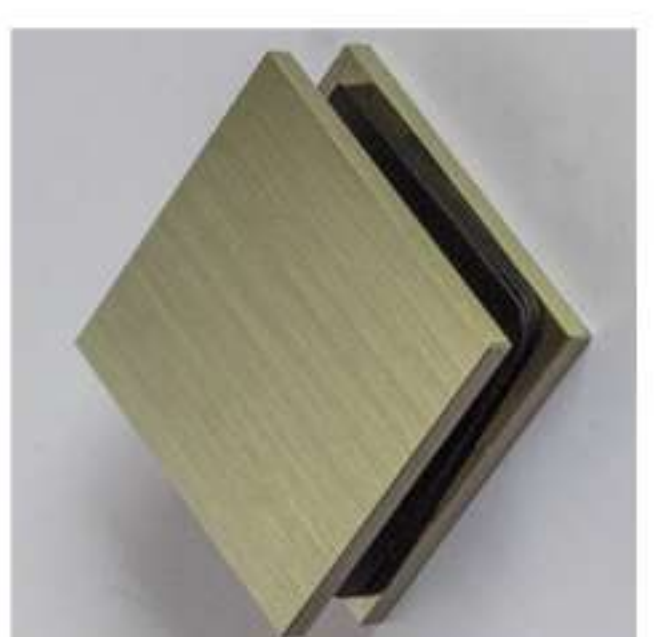
BRUSHED SATIN BRASS



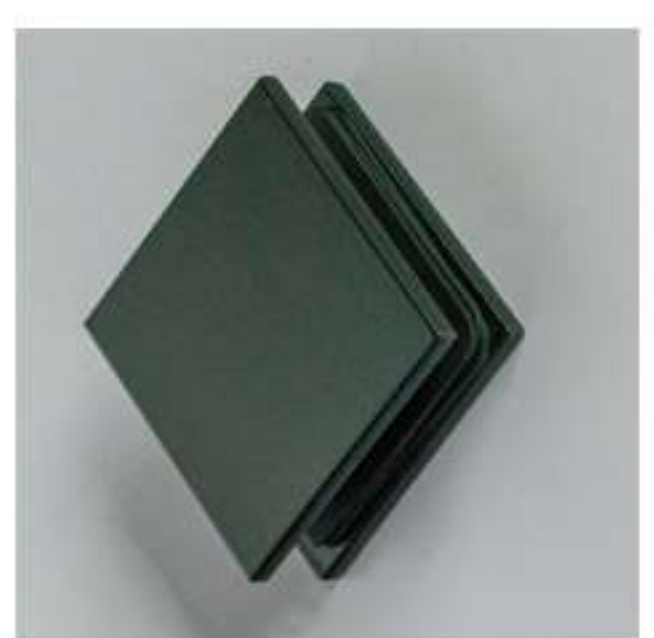
BRUSHED BRONZE



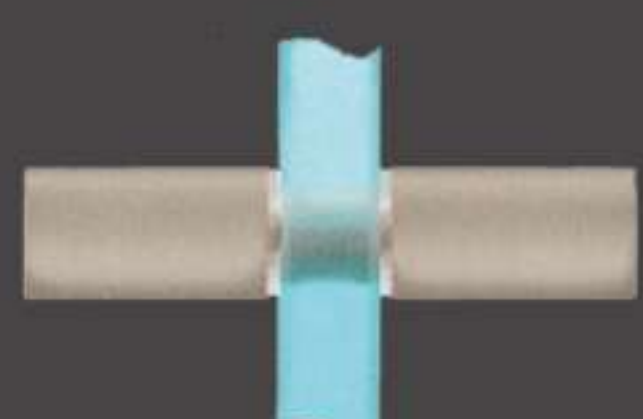
BRUSHED NICKEL



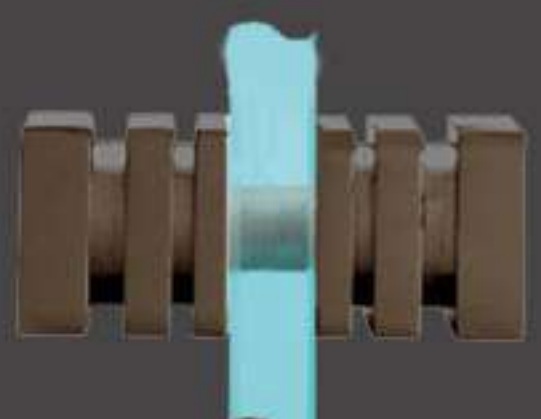
OIL-RUBBED BRONZE



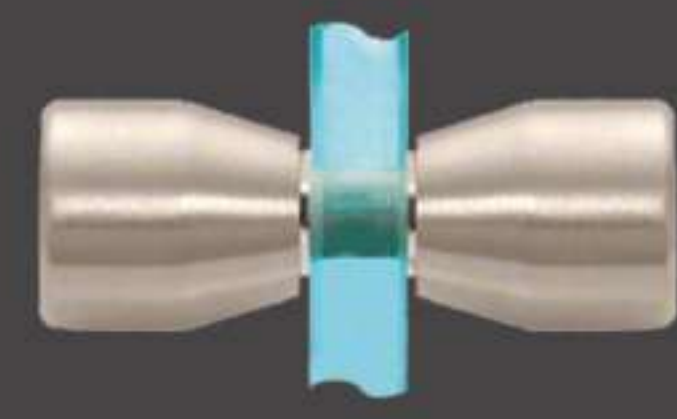
CYLINDER



SQUARE



BOW-TIE



# HANDLE OPTIONS



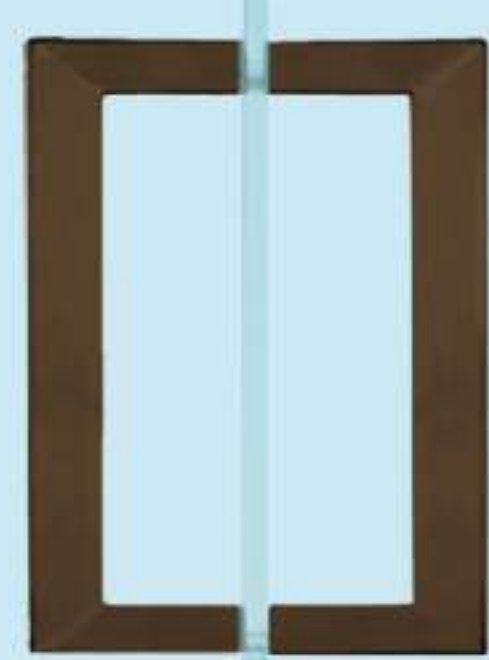
STANDARD



LADDER



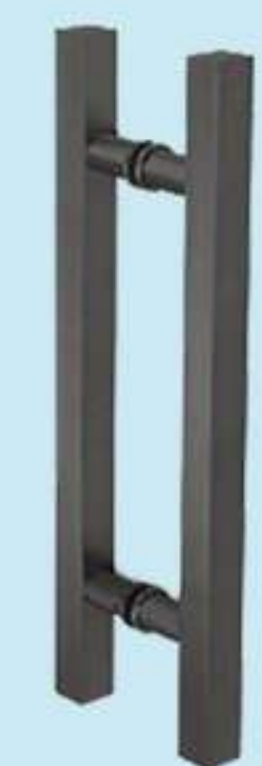
MITERED



SQUARE



ROUND MITER



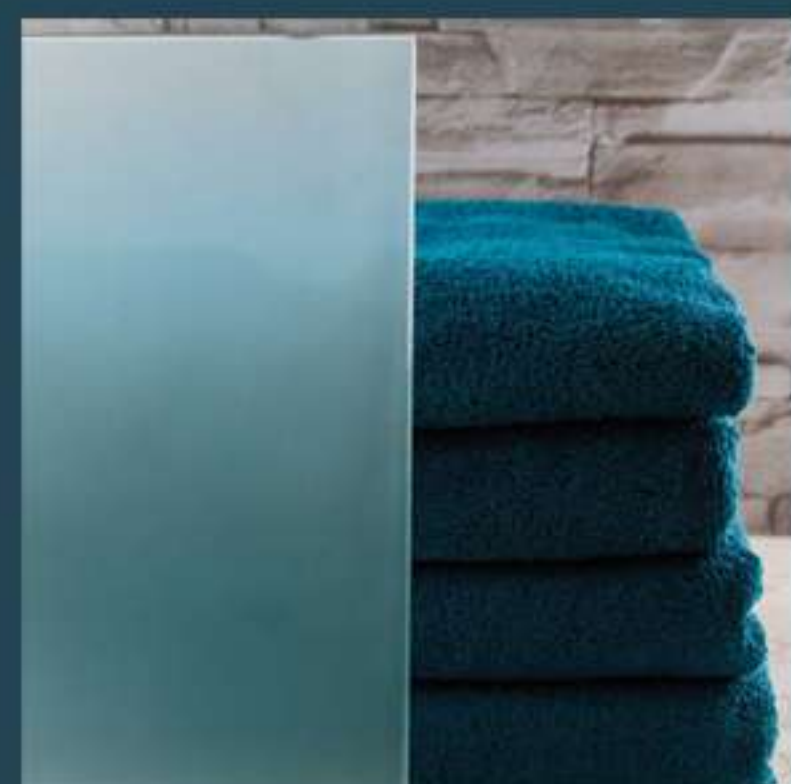
SQUARE LADDER



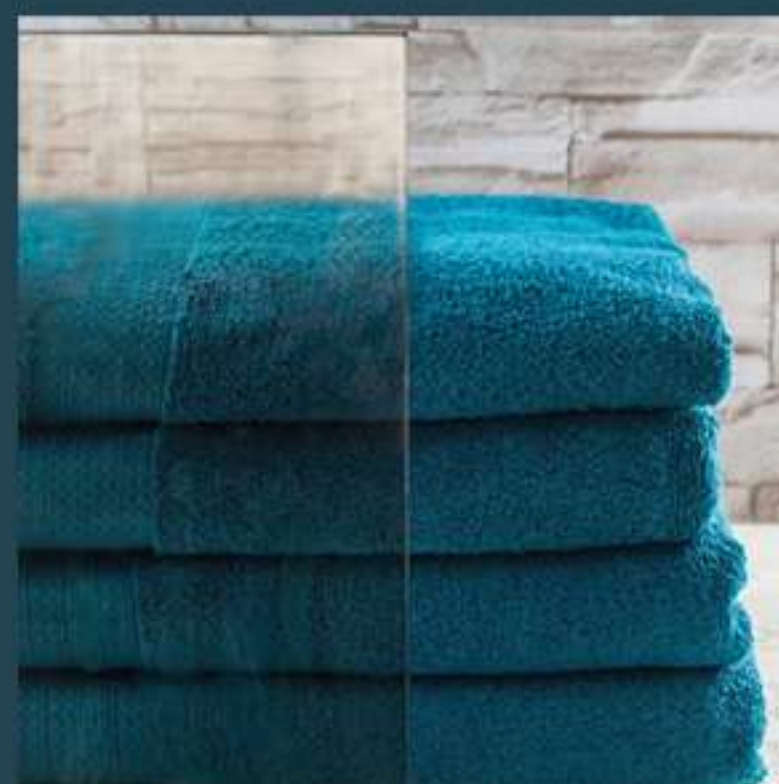
VICTORIAN

# GLASS TYPES

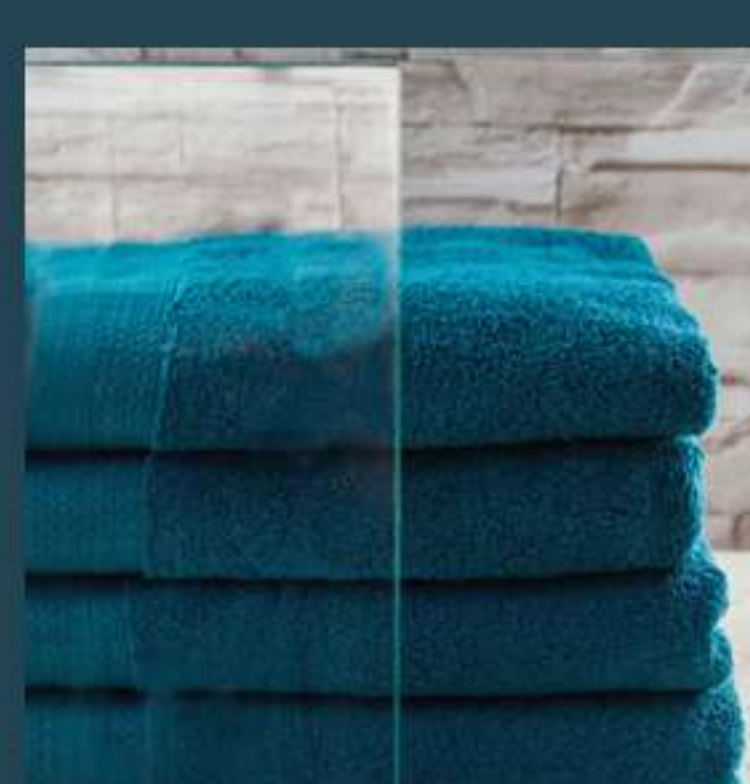
Acid Etch - 3/8 1/2  
Acid Etch Low Iron - 3/8



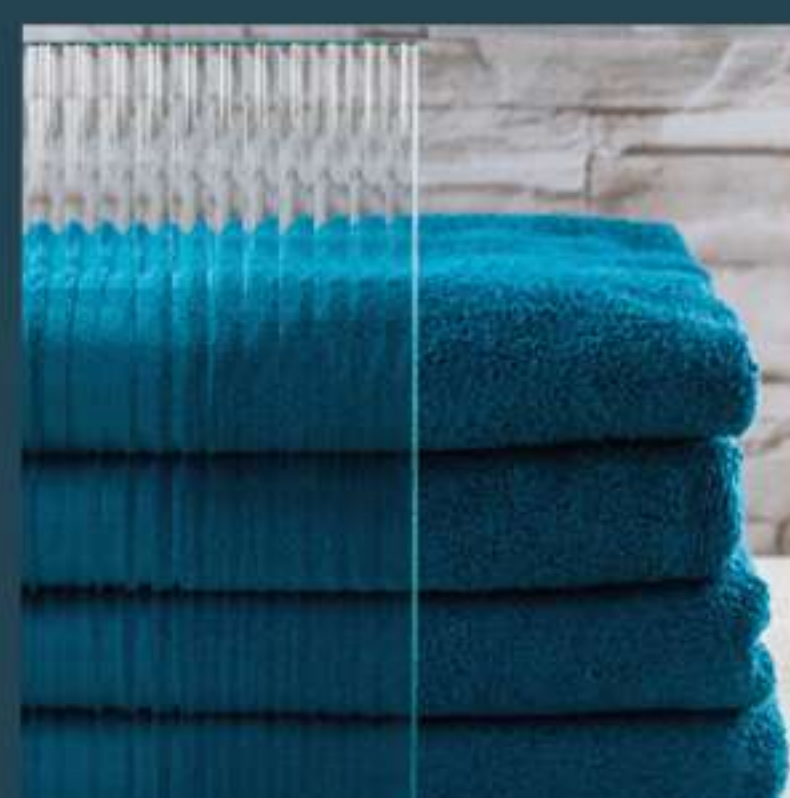
Bronze Tint - 3/8



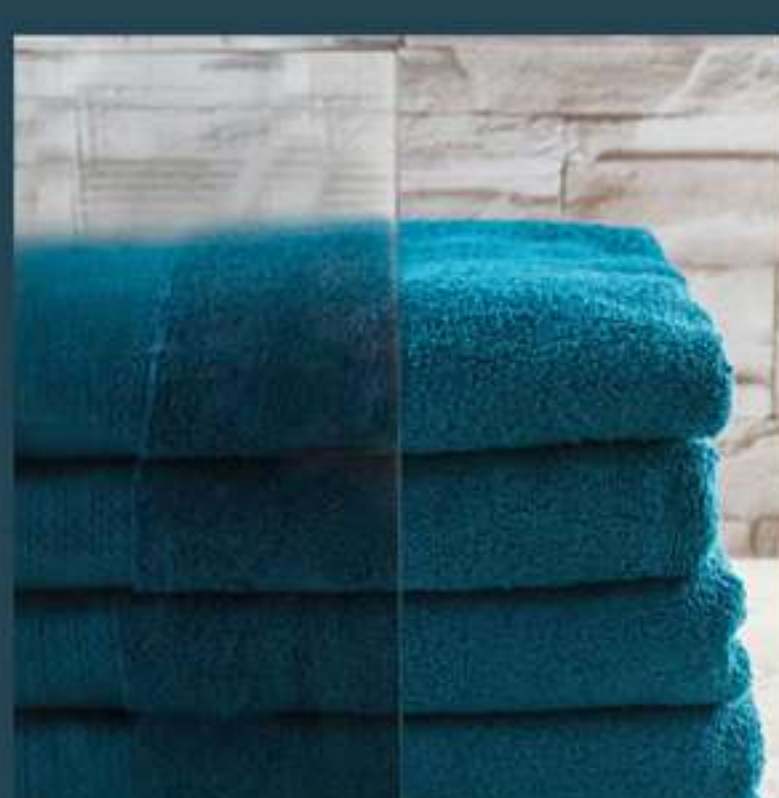
Clear - 3/8 1/2



Fluted - 3/8



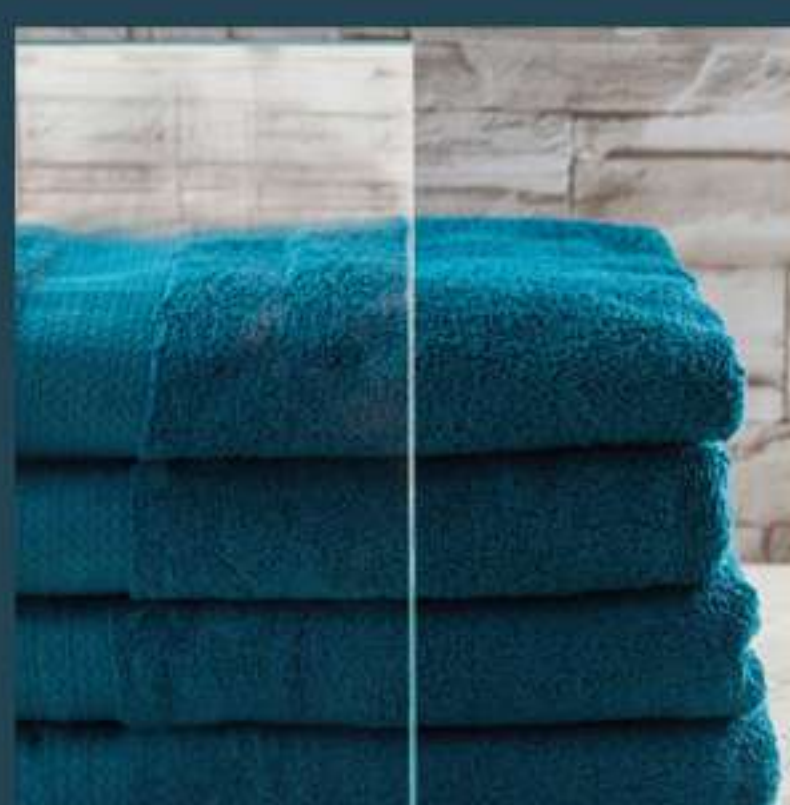
Grey Tint - 3/8



Obscure - 3/8



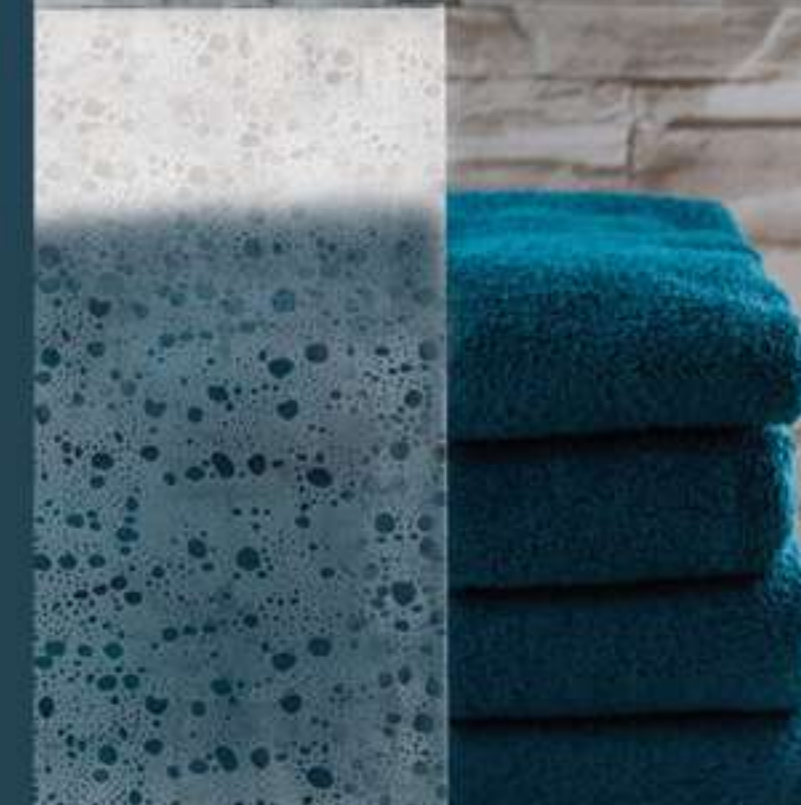
Opti-White - 3/8 1/2



Rain - 3/8



Rain Drop - 3/8



**ELITE SERIES**  
FRAMELESS HEAVY GLASS

GLASS PROTECTION BY:



INQUIRE WITHIN FOR MORE  
GLASS & HARDWARE OPTIONS

PRINTED ON FEBRUARY 2024



**SPLENDOR**  
GLASS

WWW.SPLENDORGLASS.COM





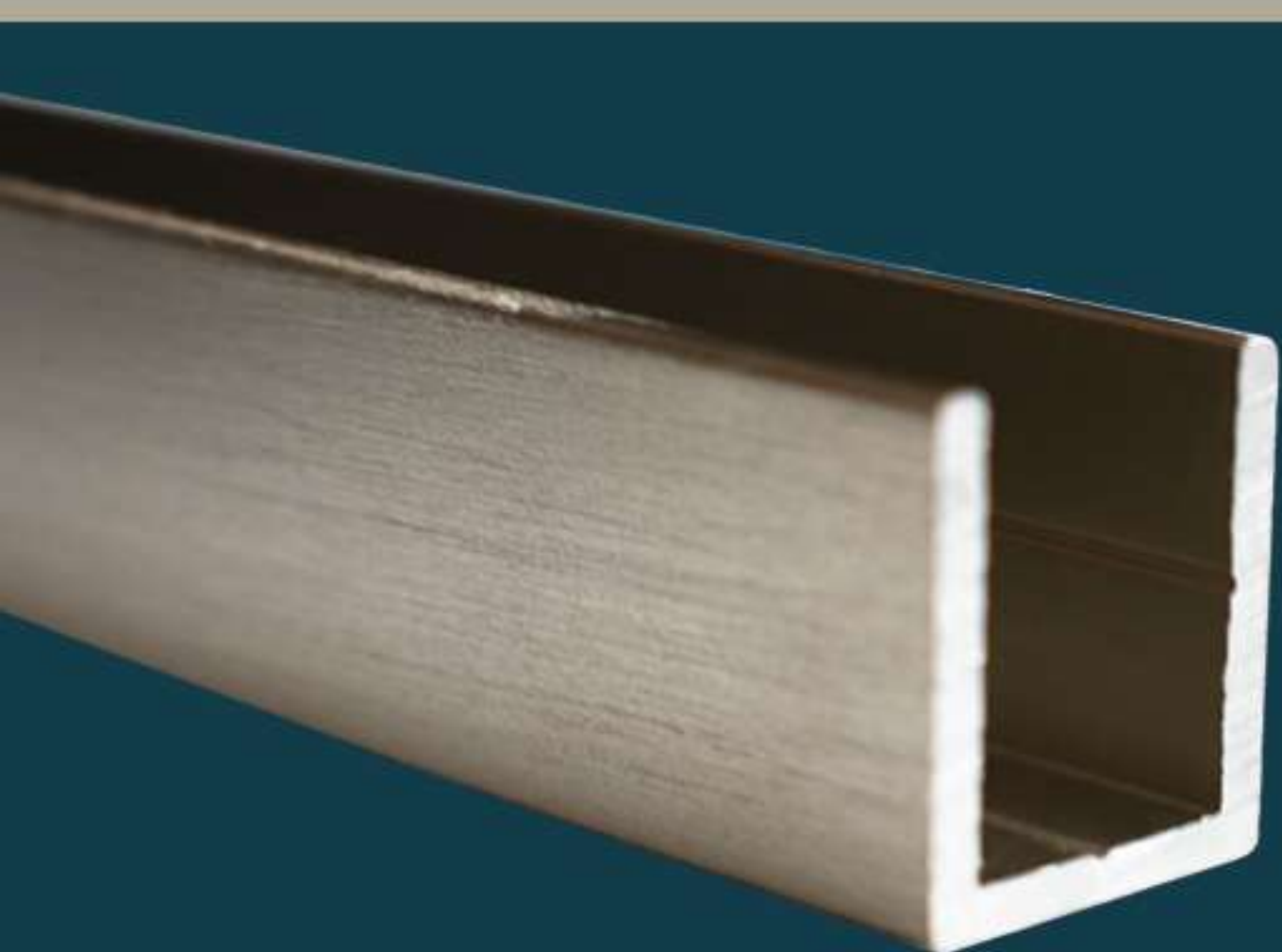
PANEL/DOOR/PANEL WITH HEADER



STEAM SHOWER WITH TRANSOM



DOOR/NOTCH PANEL WITH D-PULL



STATIONARY PANEL  
HARDWARE U-CHANNEL

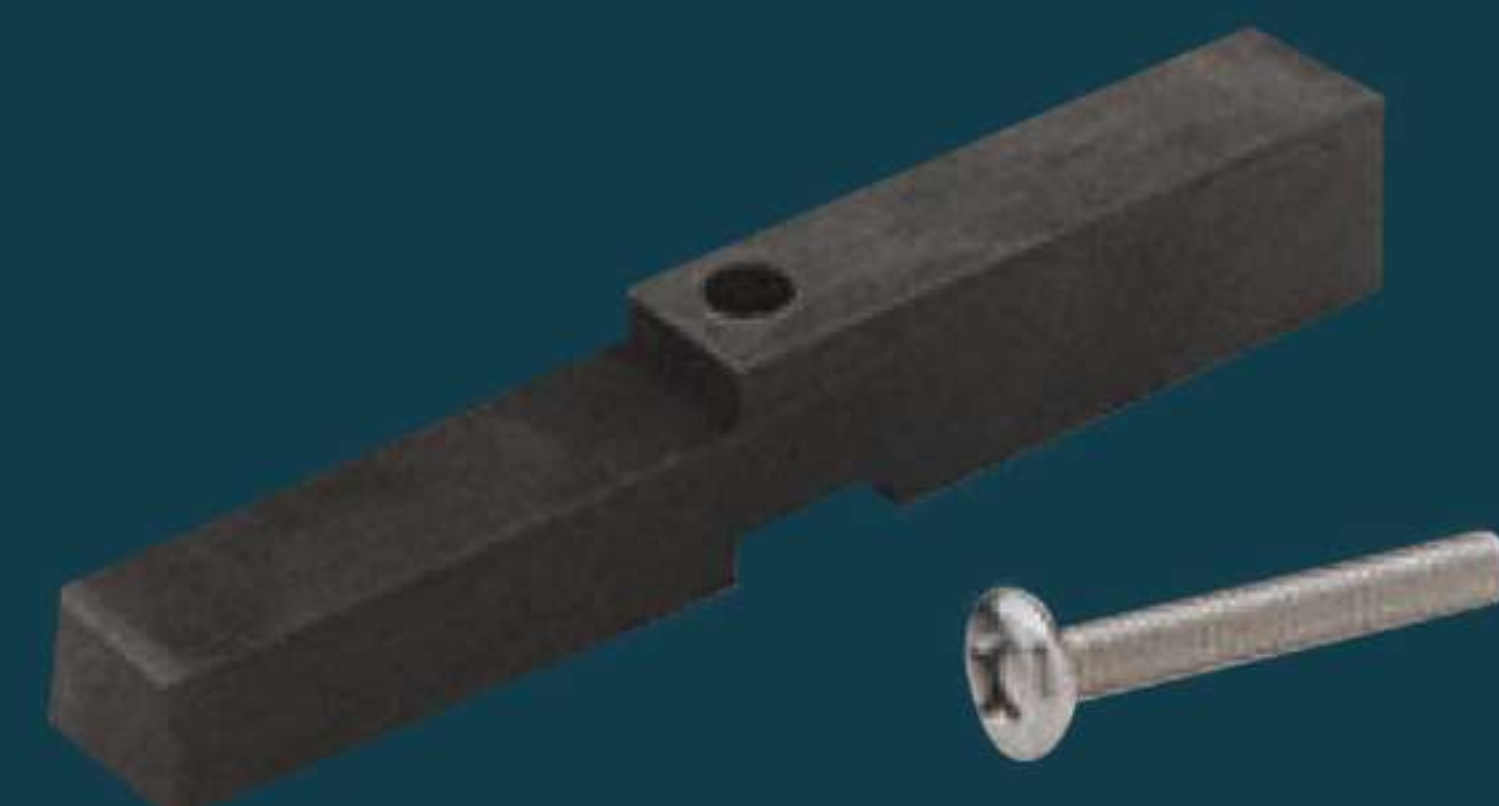
GLASS  
CLAMPS



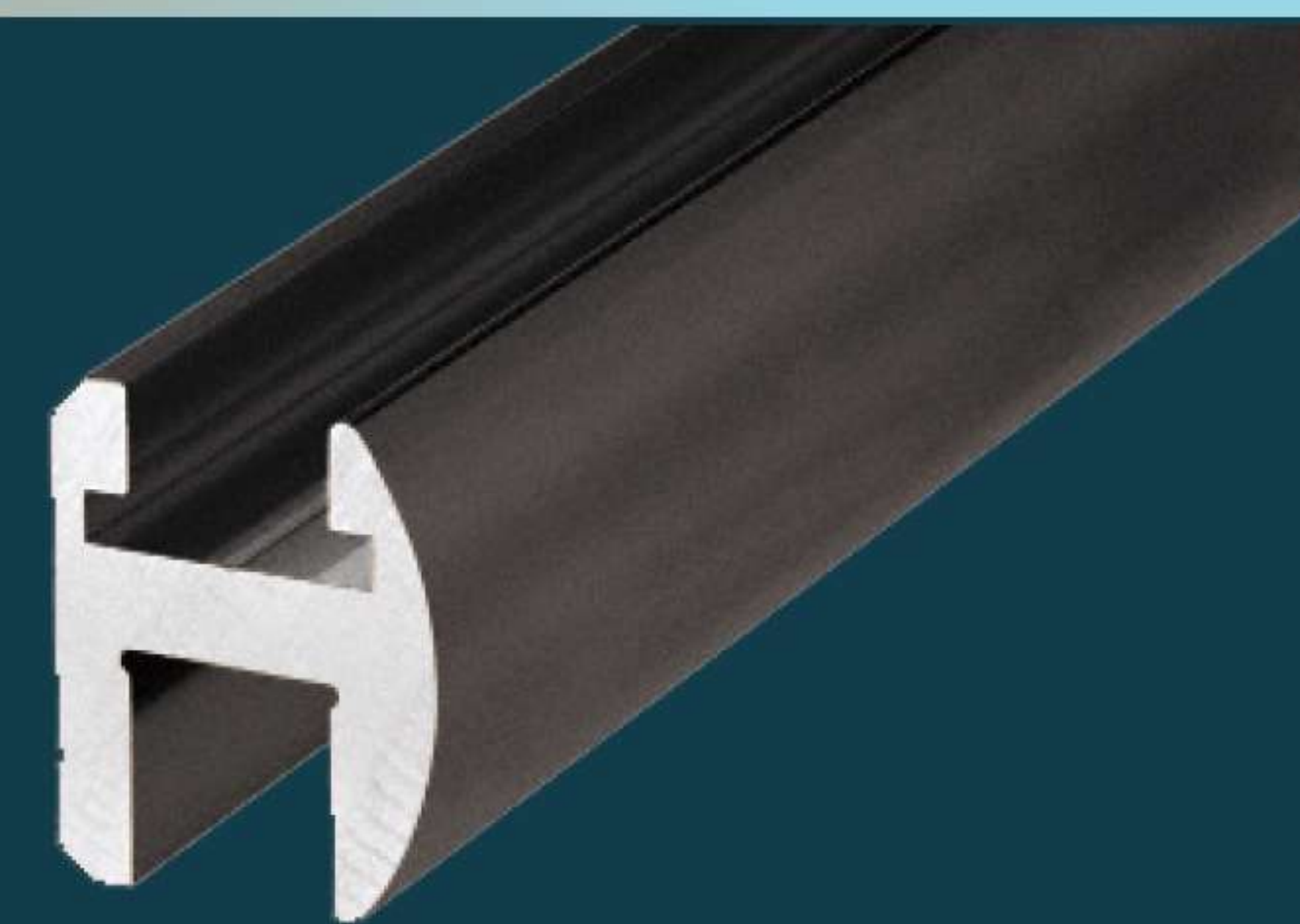
BEVEL

SQUARE

HEADER  
SYSTEM



\*AVAILABLE IN  
STANDARD & HEAVY-DUTY



WALL



\* GLASS-TO-GLASS



\*PIVOT

